

## Crosswise Convection Gas Convection Oven, 10 GN1/1

ITEM # \_\_\_\_\_

MODEL # \_\_\_\_\_

NAME # \_\_\_\_\_

SIS # \_\_\_\_\_

AIA # \_\_\_\_\_



260819 (EFCG11CSAS)

\* NOT TRANSLATED \*

### Main Features

- Main switch/Cooking mode selector which can be used to set: ON/OFF, hot air without humidification and hot air with humidification (choice of 5 different humidity levels).
- Rapid cooling of oven cavity.
- Timer to set the cooking time, adjustable up to 120 minutes or for continuous operation with an acoustic alarm to show the cycle has finished. At the end of the set cooking time the heat and the fan are automatically switched off.
- Maximum temperature of 300°C.
- Perfect evenness: guarantees perfect distribution of heat throughout the oven cavity.
- Halogen lighting and "crosswise" pan supports allow clear and unobstructed view of the products being cooked.
- Food temperature probe (available as accessory).
- Drip tray to collect residual cooking juices and fat.
- Drip tray under the door to collect condensed liquid available as accessory.
- Capacity: 10 GN 1/1 trays.

### Construction

- Robust structure thanks to stainless steel construction.
- Cooking chamber in 430 AISI stainless steel.
- Double thermo-glazed door with open frame construction, for cool outside door panel. Swing hinged easy-release inner glass on door for easy cleaning.
- Ergonomic door handle.
- Integrated drain outlet.
- 1 pair of 60 mm pitch runners is supplied as standard.
- IPx4 water protection.

### Optional Accessories

- |   |            |                          |
|---|------------|--------------------------|
| • Pair of 1/1GN AISI 304 stainless steel grids                      | PNC 921101 | <input type="checkbox"/> |
| • Support for 1/2GN pan (2pcs)                                      | PNC 921106 | <input type="checkbox"/> |
| • Flue condenser for gas ovens 10x1/1-2/1                           | PNC 921701 | <input type="checkbox"/> |
| • Probe for ovens 6 and 10x1/1GN                                    | PNC 921702 | <input type="checkbox"/> |
| • Guide kit for 1/1GN drain pan                                     | PNC 921713 | <input type="checkbox"/> |
| • Pair of AISI 304 stainless steel grids, GN 1/1                    | PNC 922017 | <input type="checkbox"/> |
| • Pair of grids for whole chicken (8 per grid - 1,2kg each), GN 1/1 | PNC 922036 | <input type="checkbox"/> |
| • AISI 304 stainless steel grid, GN 1/1                             | PNC 922062 | <input type="checkbox"/> |
| • Base for oven 10x1/1GN  | PNC 922102 | <input type="checkbox"/> |
| • Shelf guides for 10x1/1GN, ovens base                             | PNC 922106 | <input type="checkbox"/> |
| • Base on castors for 10x1/1GN ovens                                | PNC 922114 | <input type="checkbox"/> |
| • Feet for ovens 6x1/1GN, 10x1/1 and 2/1GN                          | PNC 922127 | <input type="checkbox"/> |

APPROVAL: \_\_\_\_\_



**Electrolux**  
PROFESSIONAL

## Crosswise Convection Gas Convection Oven, 10 GN1/1

- Trolley for 10x2/1GN roll-in rack PNC 922128 ☐
- Trolley for 10x1/1GN roll-in rack PNC 922130 ☐
- Retractable hose reel spray unit PNC 922170 ☐
- External side spray unit (needs to be PNC 922171 ☐  
mounted outside and includes  
support to be mounted on the oven)
- Fat filter for 10 1/1 and 2/1 GN combi PNC 922178 ☐  
steamers (gas and electric) and  
convection ovens (electric)
- Kit to convert to 10x1/1GN roll-in rack PNC 922201 ☐
- Pair of frying baskets PNC 922239 ☐
- Grid for whole chicken (8 per grid - PNC 922266 ☐  
1,2kg each), GN 1/1
- Kit universal skewer rack and 6 short PNC 922325 ☐  
skewers for Lengthwise and  
Crosswise ovens
- Universal skewer rack PNC 922326 ☐
- 6 short skewers PNC 922328 ☐
- Smoker for lengthwise and crosswise PNC 922338 ☐  
oven (4 kinds of smoker wood chips  
are available on request)
- Mesh grilling grid PNC 922713 ☐
- Non-stick universal pan, GN 1/1, PNC 925000 ☐  
H=20mm
- Non-stick universal pan, GN 1/ 1, PNC 925001 ☐  
H=40mm
- Non-stick universal pan, GN 1/1, PNC 925002 ☐  
H=60mm
- Double-face griddle, one side PNC 925003 ☐  
ribbed and one side smooth, GN 1/1
- Aluminum grill, GN 1/1 PNC 925004 ☐
- Frying pan for 8 eggs, pancakes, PNC 925005 ☐  
hamburgers, GN 1/1



Crosswise Convection  
Gas Convection Oven, 10 GN1/1

The company reserves the right to make modifications to the products  
without prior notice. All information correct at time of printing.

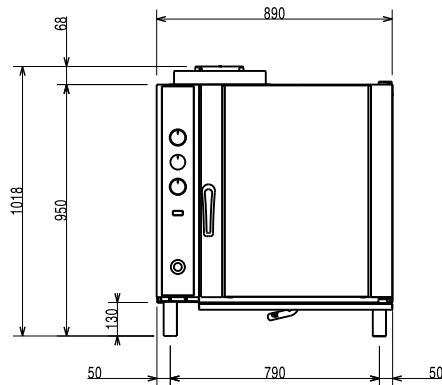
2025.12.22



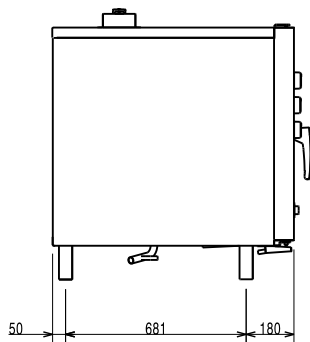
**Electrolux**  
PROFESSIONAL

## Crosswise Convection Gas Convection Oven, 10 GN1/1

Front

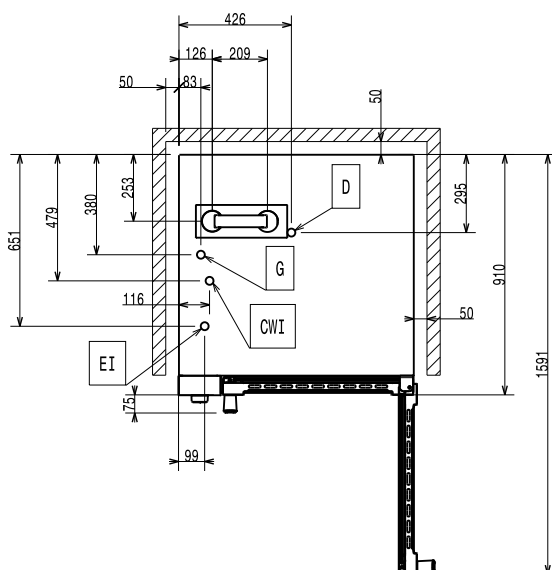


Side



CW11 = Cold Water inlet 1 (cleaning)      G = Gas connection  
CW12 = Cold Water Inlet 2 (steam generator)  
D = Drain  
EI = Electrical inlet (power)

Top



### Electric

Supply voltage: 220-230 V/1 ph/50 Hz  
Auxiliary: 0.35 kW  
Electrical power max.: 0.35 kW

### Gas

Gas Power: 18.5 kW

### Capacity:

Trays type: 10 (GN 1/1)

### Key Information:

External dimensions, Width: 890 mm  
External dimensions, Depth: 900 mm  
External dimensions, Height: 970 mm  
Net weight: 136 kg  
Functional level: Basic  
Cooking cycles - air-convection: 300 °C  
Internal dimensions, Width: 590 mm  
Internal dimensions, Depth: 479 mm  
Internal dimensions, Height: 680 mm

Crosswise Convection  
Gas Convection Oven, 10 GN1/1

The company reserves the right to make modifications to the products without prior notice. All information correct at time of printing.

2025.12.22

